

York Museums Trust

There are all sorts of butterflies around York Museums Trust.

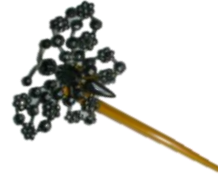
Some are on floor tiles



Some are in cases



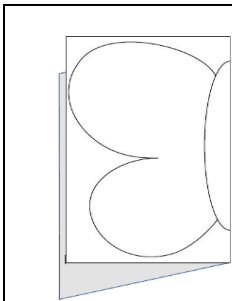
Some are on hair pins



And some are even small boxes!



Can you make a butterfly?



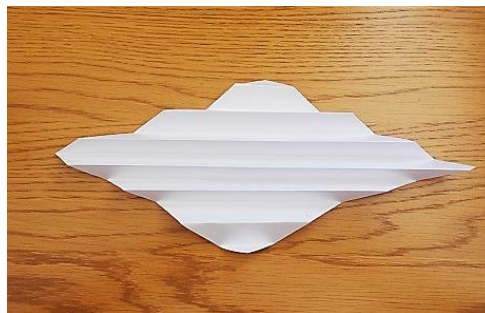
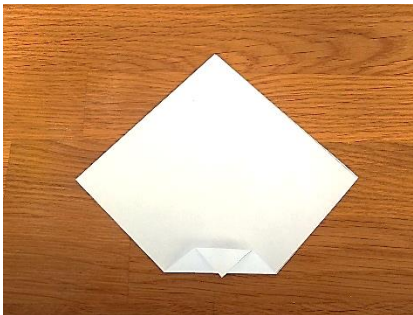
Fold your card in half and draw half a butterfly, then cut it out before opening it out to see the whole thing.

You could draw the outline of a butterfly onto card and fill it in with tissue paper and a little glue to make a stained-glass butterfly.

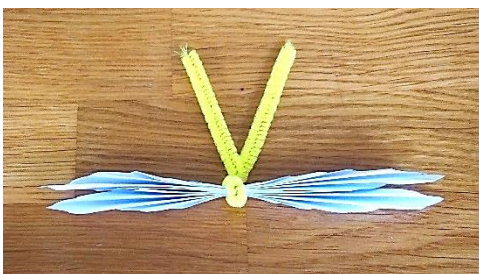
You could make small butterflies in one or two colours or a large butterfly with lots of small pieces of tissue paper. Hang it in a window and let the light shine through.



You could try concertina folding paper shapes and join them with pipe cleaners.



Try rectangles first, then ovals then any shape you like – which do you prefer? You could even add a layer of tissue paper folded too to make your butterfly more interesting.





You could make a butterfly ring by cutting a small butterfly shape out of paper. Decorate it then wrap a pipe cleaner round the middle and make a loop at the back so that you can wear it like a ring. If you move quickly, it might even flap its wings a little! Take it on a journey somewhere – maybe to visit some flowers or plants – you could even turn it into a story or a dance to share.

Some are on fans

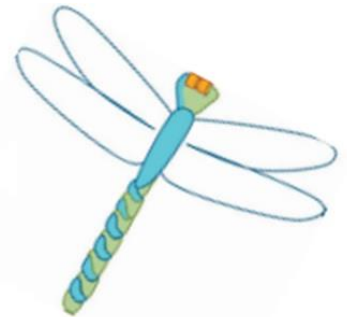
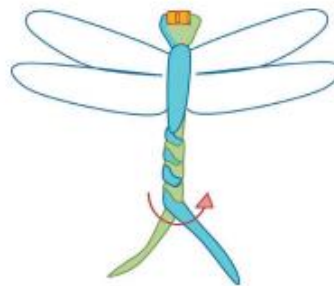
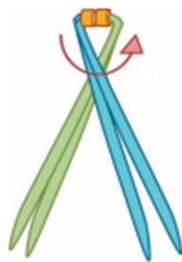
Some are on mugs

And some are fossils

You don't have to just make butterflies; we have other insects around York Museums Trust too



You could make a dragonfly by folding two pipecleaners in half with a bead pushed to the middle of each one.



Twist the pipecleaners together a couple of times then add wings cut out of paper or tissue before twisting the rest of length of pipecleaners to make the body.



You could make an insect finger puppet by wrapping a strip of card round your finger and fixing it with masking tape. You can then draw, colour in and cut out any insect you want and tape it to the tube you have just made. You could add googly eyes so it can see where it's going and pipe cleaner feelers! Why not take it for a fly or walk round and see where it ends up? You could even make up a story about where it is going or why.

If you visit the Museum Gardens you might even be able to spot a real insect – this one is a Tansy beetle but there are plenty of other types to look out for.

